

# Events for your diary

17 April	Wedding Open Evening, 4.00 – 8.00 pm
19 April	Good Friday Musical Afternoon Tea, 3.30 pm - £18.50 per person Inclusive of sandwiches, hot cross buns, scones, cream & jam, cakes & tea
21 April	Easter Sunday Lunch - £32.50 per person Inclusive of three course lunch, coffee & music
22 April	Easter Funday – 12.30 pm Lunch for all the family followed by fun & games with our children's entertainer Adults £22 Children 10 or under £13 Children 5 or under £5.50
26 April	Spring Wine Tasting - £270 per couple Inclusive of wine, dinner, bed & breakfast. Non-Residents £65 per person inclusive of wine & dinner
8 May	Musical Afternoon Tea, 3.30 pm - £18.50 per person Inclusive of sandwiches, scones, cream & jam, cakes & tea
12 May	Wedding Open Day, 1.00 - 4.00 pm Looking for the perfect venue? Join us for a glass of fizz & canapes and an informal look around
10 June	Gardening Day - £27.50 per person 10.30 am Coffee followed by a tour of the gardens, two course lunch & a short talk
12 June	Musical Afternoon Tea, 3.30 pm - £18.50 per person Inclusive of sandwiches, scones, cream & jam, cakes & tea
16 June	Father's Day Lunch - £32.50 per person Inclusive of three course lunch & coffee
24 July	Musical Afternoon Tea, 3.30 pm - £18.50 per person Inclusive of sandwiches, scones, cream & jam, cakes & tea
14 August	Musical Afternoon Tea, 3.30 pm - £18.50 per person Inclusive of sandwiches, scones, cream & jam, cakes & tea
11 September	Musical Afternoon Tea, 3.30 pm - £18.50 per person Inclusive of sandwiches, scones, cream & jam, cakes & tea

Looking for that perfect gift for someone special?

**Gibbon Bridge Gift Vouchers Now Available**

Now available on line by visiting our website or by ringing 01995 61456



Chipping, Forest of Bowland, Lancashire, PR3 2TQ T: 01995 61456

E: [reception@gibbon-bridge.co.uk](mailto:reception@gibbon-bridge.co.uk) [www.gibbon-bridge.co.uk](http://www.gibbon-bridge.co.uk)

[f/gibbonbridge](https://www.facebook.com/gibbonbridge) [#gibbonbridge](https://www.instagram.com/gibbonbridge) [#gibbon\\_bridge](https://www.tiktok.com/@gibbon_bridge)

PRIVATELY OWNED BY JANET SIMPSON

Spring/Summer 2019

Coming up...

*Gibbon Bridge*  
HOTEL & RESTAURANT



## Walking In The Ribble Valley

Monday 3rd June - Wednesday 5th June  
Standard Room based on two sharing - £400  
Suite based on two sharing - £440  
Standard room single occupancy - £260  
Prices are inclusive of two nights dinner, bed & breakfast, the guided walk and a picnic lunch.



Come & walk with us! Arrive on Monday 3rd June and then join local walkers & aficionados of the area Craig & Janet Ward. The walk will take in Longridge Fell and Stonyhurst College, as well as some spectacular views. We will meet you enroute with a proper picnic lunch! The walk is approximately 8 miles and moderate in difficulty. You will need your walking boots and waterproofs.



## Three Day Break

Inclusive of dinner, bed & breakfast  
1st April - 20th December 2019  
£495 per couple in a standard room  
£555 per couple in a suite  
Single Rate £360 inclusive of DB&B  
Supplement payable for stays including a Saturday night.  
Subject to availability.

Our three day break is as popular as ever and gives you the chance to come and relax and enjoy not only Gibbon Bridge but the Forest of Bowland throughout the year.

## Mid Week Tariff - Available All Year

Sunday to Friday £190 per standard room dinner, bed & breakfast or £210 in a suite based on 2 sharing

Great for a quick one night break or to celebrate a birthday or anniversary!

LOOKING FOR A WEDDING VENUE - THEN LOOK NO FURTHER  
PLEASE CALL US TO MAKE AN APPOINTMENT

[www.gibbon-bridge.co.uk](http://www.gibbon-bridge.co.uk) [f/gibbonbridge](https://www.facebook.com/gibbonbridge) [#gibbonbridge](https://www.instagram.com/gibbonbridge) [#gibbon\\_bridge](https://www.tiktok.com/@gibbon_bridge)

## Musical Afternoon Teas

3.30-5.00pm

Wednesdays: 8 May, 12 June, 24 July, 14 August, 11 September.

Take a stroll around our spring garden and then settle down for a delicious afternoon tea and enjoy the pianist playing.

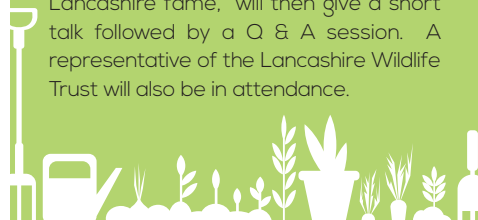
£18.50 per person

Full payment required at the time of booking.

## Gardening Day

Monday 10 June £27.50 per person  
10.30 am Coffee & 2 Course  
Lunch included

Arrive in time for coffee and then take a tour of the gardens & grounds with one of our experts, and then enjoy a delicious two course lunch. Peter Fowley, of Radio Lancashire fame, will then give a short talk followed by a Q & A session. A representative of the Lancashire Wildlife Trust will also be in attendance.



## Dining At Gibbon Bridge

### SUNDAY LUNCH

with the Pianist playing - 2 Courses £23.50 & 3 courses £27.50

### LUNCH

Monday - Saturday 1 course £14.50,  
2 Courses £18.50, 3 Courses £22.50

### DINNER

6.30-8.00 pm - TDH menu  
2 courses £20 & 3 Courses £25  
A la Carte Menu also available

Our Restaurant is open daily for lunch & dinner. Our produce is locally sourced, if not from our own gardens, then from local suppliers and producers. We always recommend that you give us a call in advance to book - just to avoid any disappointment if we are full.

To book your table please call 01995 61456

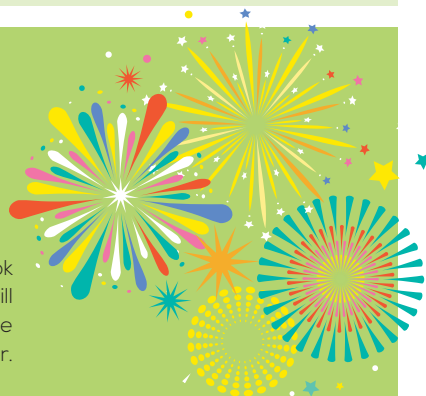
## Bonfire Night

Saturday 2 November

Adults £27 Children £15

Stay overnight for £125 per room for two.  
Upto 2 children can stay for free!

Yes we are already thinking about Bonfire Night! Book early to avoid disappointment. The fireworks will commence at 5.00 pm with a hot chocolate/mulled wine around the fire and be followed up with a hotpot supper.



## £99 Per Room Bed & Breakfast

On the following dates we are offering an overnight stay inclusive of a standard room and full English breakfast. Limited availability so ring to book your room **NOW!**

Sat 27 April, Sun 5 May,

Fridays: 24 May, 7, 14, 28 June

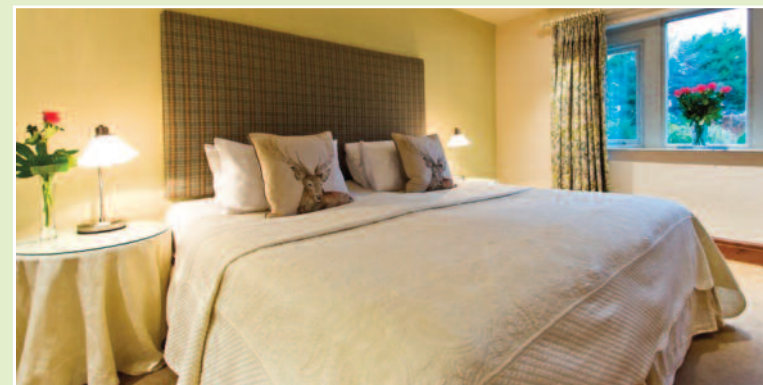
## Spring Breakaway

12, 13 & 14 April or 17, 18 & 19 May  
Bed & Breakfast  
at £65 per person per night  
(minimum 2 night stay required)

To receive this special rate you are required to book a minimum of two nights over either of these weekends & dinner on one of the nights. Please call to book.



## Bed and Breakfast Tariff



Rates are per room per night and include full English breakfast & VAT based on two people sharing.

- Staple Oak Suite (Honeymoon Suite) £300
- VIP Suites £225
- Suites £200
- Standard Double or Twin Rooms £175

We have two rooms equipped for guests with special needs

### Beds & Cots

- Extra beds in rooms are charged at £20 per night on a B&B basis
- Cots can be provided at £10 per night
- Dogs are charged at £30 per stay

### Single Occupancy Tariff

- VIP Suites £130
- Suites £110
- Standard Rooms £100

### CANCELLATIONS

In the event of a booking being cancelled the hotel reserves the right to make a cancellation charge.

### RESERVATIONS

To make a reservation we require your full name, address, telephone number and a credit/debit card number. Please telephone, email or write.

### CHECK IN/DEPARTURE

Check-in time is 2.00 pm (Sunday 3.00 pm) and check-out time is 11.00 am. There may be a charge for early check-ins.

THE HOTEL RESERVES THE RIGHT TO AMEND THIS TARIFF WITHOUT NOTICE